

Scrap Equipment 400XL

Description

A model of efficiency, the 400XL logger/baler provides the comfort and control needed to make long work days seem shorter.

✓ Up to 12 tons per hour

✓ 62,000 lbs

✓ Mobile

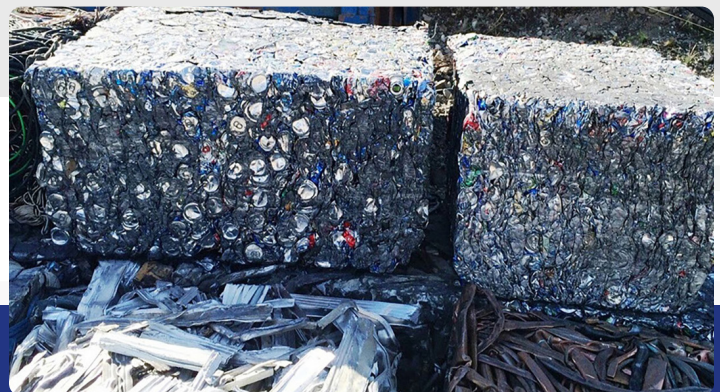


100% AMERICAN MADE 

LOAD. CYCLE. STACK. REPEAT.

A Model of Efficiency

The ALJON 400XL is a rugged, productive, mobile scrap processing machine. The 400XL baler's "clam shell" box design and large loading chamber make for fast efficient processing of bulky loose scrap and white goods as well as ferrous and non-ferrous light gauge material. Processed bales are formed into easy to handle 32 in x 20 in (813mm x 508mm) x variable bundles. The 400XL has all power needed to allow the operator to use the crane to sort material, stack bundles etc. during the automatic baling cycle with no slowdown.



EQUIPMENT SPECIFICATIONS

(Nominal) Dimensions With Material Handler:

Length	12.37 m / 40 ft. 6 in.
Height	4.1 m / 13 ft. 6 in.
Width	2.6 m / 8 ft. 5 in.
Weight	28,124 kg / 62,000 lbs

Open Chamber:

Length	3.65 m / 12.3 ft.
Width	2.4 m / 8 ft.
Height "L"	1.1 m / 3.6 ft.

Bale Size:

Length	Variable
Width	0.81 m / 32 in.
Height	0.5 m / 20 in.

Production:

Scrap Metal (avg)	Up to 12 tons per hour
-------------------	------------------------

Tank Capacities:

Diesel Fuel	340 liters / 90 gallons
Hydraulic Fluid	692 liters / 183 gallons

Power Unit:

Volvo Penta Tier 4 Final
215 HP for standard unit with crane; 185 HP for craneless models
150 HP Electric Motor with VFD Starting System